



AP[®] Calculus AB

2016 Free-Response Questions

© 2016 The College Board. College Board, Advanced Placement Program, AP, AP Central, and the acorn logo are registered trademarks of the College Board.

Visit the College Board on the Web: www.collegeboard.org.

AP Central is the official online home for the AP Program: apcentral.collegeboard.org.

2016 AP[®] CALCULUS AB FREE-RESPONSE QUESTIONS**CALCULUS AB
SECTION II, Part A****Time—30 minutes****Number of problems—2****A graphing calculator is required for these problems.**

t (hours)	0	1	3	6	8
$R(t)$ (liters / hour)	1340	1190	950	740	700

1. Water is pumped into a tank at a rate modeled by $W(t) = 2000e^{-t^2/20}$ liters per hour for $0 \leq t \leq 8$, where t is measured in hours. Water is removed from the tank at a rate modeled by $R(t)$ liters per hour, where R is differentiable and decreasing on $0 \leq t \leq 8$. Selected values of $R(t)$ are shown in the table above. At time $t = 0$, there are 50,000 liters of water in the tank.
- (a) Estimate $R'(2)$. Show the work that leads to your answer. Indicate units of measure.
- (b) Use a left Riemann sum with the four subintervals indicated by the table to estimate the total amount of water removed from the tank during the 8 hours. Is this an overestimate or an underestimate of the total amount of water removed? Give a reason for your answer.
- (c) Use your answer from part (b) to find an estimate of the total amount of water in the tank, to the nearest liter, at the end of 8 hours.
- (d) For $0 \leq t \leq 8$, is there a time t when the rate at which water is pumped into the tank is the same as the rate at which water is removed from the tank? Explain why or why not.
-

2016 AP[®] CALCULUS AB FREE-RESPONSE QUESTIONS

2. For $t \geq 0$, a particle moves along the x -axis. The velocity of the particle at time t is given by

$v(t) = 1 + 2\sin\left(\frac{t^2}{2}\right)$. The particle is at position $x = 2$ at time $t = 4$.

- (a) At time $t = 4$, is the particle speeding up or slowing down?
 - (b) Find all times t in the interval $0 < t < 3$ when the particle changes direction. Justify your answer.
 - (c) Find the position of the particle at time $t = 0$.
 - (d) Find the total distance the particle travels from time $t = 0$ to time $t = 3$.
-

END OF PART A OF SECTION II

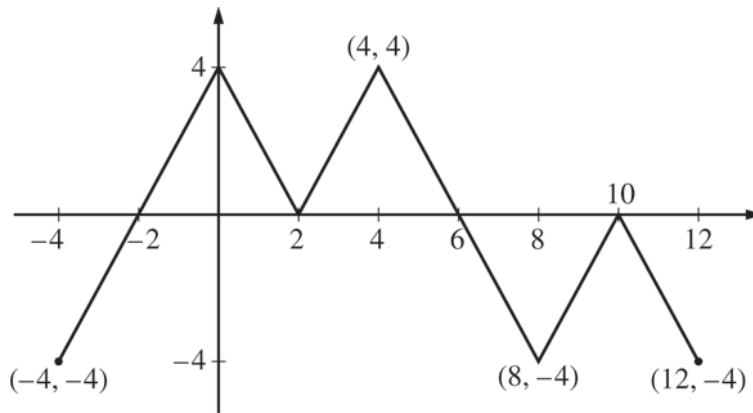
2016 AP[®] CALCULUS AB FREE-RESPONSE QUESTIONS

**CALCULUS AB
SECTION II, Part B**

Time—60 minutes

Number of problems—4

No calculator is allowed for these problems.



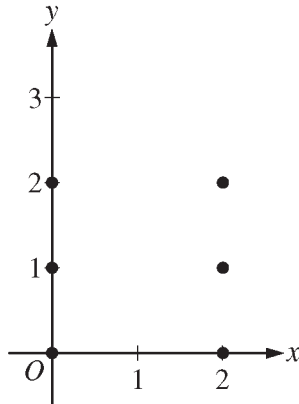
Graph of f

3. The figure above shows the graph of the piecewise-linear function f . For $-4 \leq x \leq 12$, the function g is defined by $g(x) = \int_2^x f(t) dt$.
- (a) Does g have a relative minimum, a relative maximum, or neither at $x = 10$? Justify your answer.
 - (b) Does the graph of g have a point of inflection at $x = 4$? Justify your answer.
 - (c) Find the absolute minimum value and the absolute maximum value of g on the interval $-4 \leq x \leq 12$. Justify your answers.
 - (d) For $-4 \leq x \leq 12$, find all intervals for which $g(x) \leq 0$.
-

2016 AP[®] CALCULUS AB FREE-RESPONSE QUESTIONS

4. Consider the differential equation $\frac{dy}{dx} = \frac{y^2}{x-1}$.

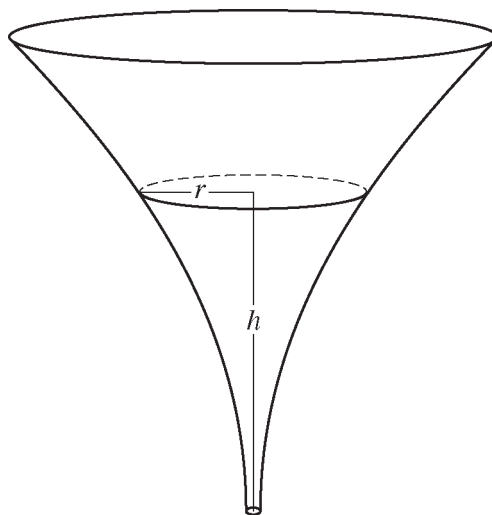
(a) On the axes provided, sketch a slope field for the given differential equation at the six points indicated.



(b) Let $y = f(x)$ be the particular solution to the given differential equation with the initial condition $f(2) = 3$. Write an equation for the line tangent to the graph of $y = f(x)$ at $x = 2$. Use your equation to approximate $f(2.1)$.

(c) Find the particular solution $y = f(x)$ to the given differential equation with the initial condition $f(2) = 3$.

2016 AP[®] CALCULUS AB FREE-RESPONSE QUESTIONS



5. The inside of a funnel of height 10 inches has circular cross sections, as shown in the figure above. At height h , the radius of the funnel is given by $r = \frac{1}{20}(3 + h^2)$, where $0 \leq h \leq 10$. The units of r and h are inches.
- (a) Find the average value of the radius of the funnel.
- (b) Find the volume of the funnel.
- (c) The funnel contains liquid that is draining from the bottom. At the instant when the height of the liquid is $h = 3$ inches, the radius of the surface of the liquid is decreasing at a rate of $\frac{1}{5}$ inch per second. At this instant, what is the rate of change of the height of the liquid with respect to time?
-

2016 AP[®] CALCULUS AB FREE-RESPONSE QUESTIONS

x	$f(x)$	$f'(x)$	$g(x)$	$g'(x)$
1	-6	3	2	8
2	2	-2	-3	0
3	8	7	6	2
6	4	5	3	-1

6. The functions f and g have continuous second derivatives. The table above gives values of the functions and their derivatives at selected values of x .

(a) Let $k(x) = f(g(x))$. Write an equation for the line tangent to the graph of k at $x = 3$.

(b) Let $h(x) = \frac{g(x)}{f(x)}$. Find $h'(1)$.

(c) Evaluate $\int_1^3 f''(2x) dx$.

STOP

END OF EXAM